



# ROUGE FLAMANDE



- *Highly Fertile + easy calving breed with 1.33 straws to conception breed average*
- *Of interest to cheese makers*
- *Wide frames, 373 days calving interval*
- *Ideal for block calving herds*

January 2025

## TRAITS & PERFORMANCES

The Rouge Flamande is one of the oldest dairy breeds described in France, whose origin is common with Dairy Shorthorns from Holland, Denmark, Angeln and Devon England.

It spread across Northern France to the Paris basin, reaching almost 1 million head in the mid 1850's before hitting a period of decline as a result of rinderpest in the late 19th century (250,000 lost) to the Great War and second World War ( 300,000) and a foot and mouth outbreak in the 1960s.

In contrast with many other breeds, the Rouge Flamande has always been a dairy specialised breed, even back when all cattle had to be multipurpose.

The Rouge Flamande logically left a lasting footprint on its original birthplace in the French Nord and Pas-de-Calais, where its milk has forged several regional cheeses (Bergues, Maroilles and Vieux-Lille, among others).

The breed is currently experiencing resurgence in popularity, due to its adaptability to its home-region conditions and its highly protein-rich milk. Producers have leagued together to earn a Protected Designation of Origin (Appellation d'Origine Contrôlée – AOC) for the Bergues cheese, which is produced from Rouge Flamande milk.

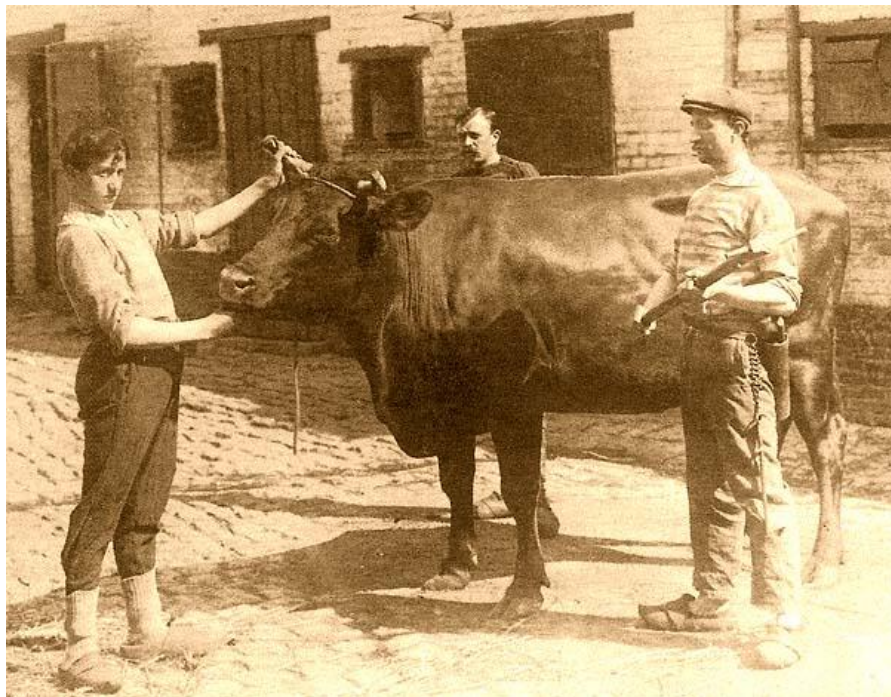
In addition to its dairy production, the Rouge Flamande also produces high marketable veal calves due to their good percentage yield at slaughter and a stand-out breed-specific dense beef that has high added-value for sector professionals.

## SELECTION

Breed selection objectives for Rouge Flamande essentially hinge on two lead criteria: productivity, where the target is to improve both milk quantity and protein yields, and morphology, where the aim is to preserve the size of frame while improving udder quality.

The Danish Red, which had a long history of being crossed in to add genetic diversity to the bloodlines and improve dairy traits, is now used more sparingly.

All the bulls enrolled into the progeny-testing program are of French maternal parentage, the aim being to reduce the Danish blood ancestry currently carried down to about 25%. Today, the return to a breed adapted to its home region and that carries signs of quality plays to the advantage of French bloodlines that present the frame and hardiness that the market is looking for.



## Key figures

- THE BREED IN FRANCE
- 3,500 cows
- 60 farms
- FRAME
- Height at withers (adult cow): 135 to 148 cm
- Adult cow weight: 550 to 750 kg when finished
- Adult bull weight: 950 to 1,250 kg
- Young-bull carcass weight: 300 to 350 kg
- TRAITS
- Milk yield 305 days: 6,637kg
- Fat content: 3.98 % (4.17% UK test)
- Crude protein content: 3.44 % (3.61% UK)
- **NOTE** Add 5% to fat & protein levels displayed to account for different testing methods in France/ UK equivalent is displayed also.

Official milk recording results 2018 -  
Mature equivalent milk yield - Institut de  
l'Elevage & France Conseil Elevage



**GENES DIFFUSION**

Nous innovons, vous progressez

**CATTLE GENIE / Sole supplier**

**in Great Britain for**

**ROUGE FLAMANDE**

## Genetic diversity maintained

The Flemish breed has seed stocks of 120 bulls tested or young test bulls, stocks are held at CIA Genes Diffusion in Douai. This male population is divided into 20 well-defined genetic families, which indicates a long-term security for the users of the breed. This essential security to the genetic independence of the breed is dearly acquired. It necessarily involves the periodic re-use of older origins and sometimes therefore logically less efficient strains.

Each year, therefore, 3 to 5 new bulls are integrated into the Douai bull stud for the realisation of their 200 A.I. tested bulls. The seed stocks for each bull are usually 5,000. To add, since 2012, the race has its 1<sup>st</sup> testing bulls with sexed semen in order to produce more heifers.

It should also be noted that the program aims to gradually reduce the percentage of blood of the Danish Red Breed (RDM) which has been used fairly intensively from 1965 to 1995. The current impregnation in the breed is estimated between 20 and 25%



# CURSUS

## A2 / A2



**Production** 12 / 2024  
**Days** 305  
**Milk** 6,978 Kg  
**Fat** 4,52% \*  
**Protein** 3,80% \*  
\* Adjusted up 5% to UK test

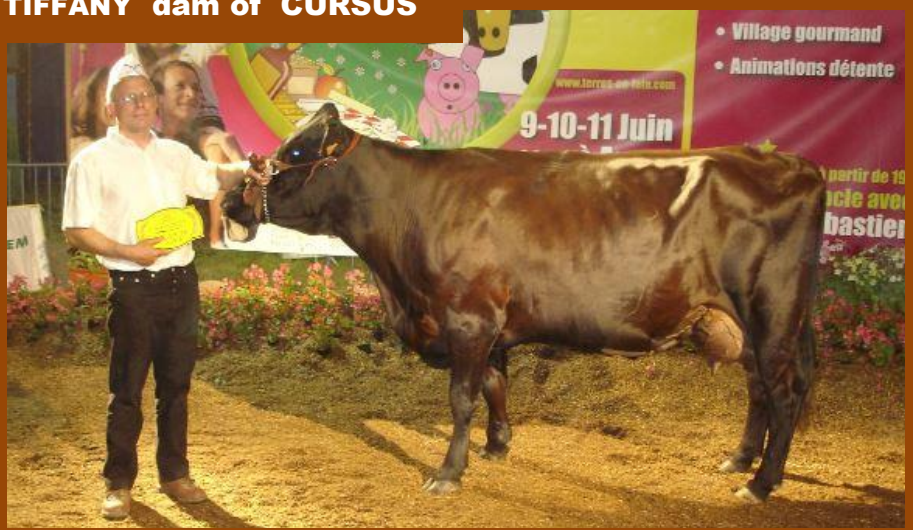
**28% DK**

Cursus transmits extra depth of body and a very correct rump structure for best locomotion. Daughters have good udder and teat placement with above breed average milk production combined with big pluses for protein and fat. CURSUS has 28% Danish Red blood in his pedigree, his dam Tiffany (pictured) is a very efficient dairy cow, she is the ideal grazing type animal. With Cursus you get easy care daughters.

**Breeder :** Gaec Hedon  
59550 Prisches  
**D.O.B.** : 29 / 11 / 2006  
**H.B.N.** : FR 0201956632

**A.I. Code UK**  
**MS 0501**

**TIFFANY dam of CURSUS**



Milk	Protein	B / Fat
341	+1.8% ~ 23Kg	+3.2% ~ 30Kg
Cell count	Index 12 / 2024	
0,1 Rel. 90%	145 Dtrs ~ 48 Herds Rel. 95% production	

**INEL 32**



**HEMATIE daughter of CURSUS**

**CURSUS**  
FR0201956632

**TSAR**  
FR5926009350

**TIFFANY**  
FR620479349

**JERICHO**  
FR6294021449

**LINOTTE**  
FR5995017648

**PEDRO**  
FR6204103580

**NENETTE**  
FR6203056741



# DOUMA

## A2 / A2



**Production** 12 / 2024  
**Days** 305  
**Milk** 7,866 Kg  
**Fat** 3,93% \*  
**Protein** 3,68% \*

\* Adjusted up 5% to UK test

**27% DK**

Daughters of Douma are compact cows not being overly long or tall. Good udder and teat placement are qualities along with above breed average milk production with a big plus for protein and reduced cell counts. Douma has 27% Danish Red blood and is a son of the award winning dam Urane (pictured) who displays lots of width through her body with correct hip construction , good udder and teat length.

**Breeder : Xavier CUVILLIER**  
 62690 Bethonsart

**D.O.B. : 20 / 12 / 2008**

**H.B.N. : FR 6206827795**

**A.I. Code UK**  
**MS 0500**

**URANE dam of DOUMA**



Milk	Protein	B / Fat
1229	0,6% ~ 45Kg	-2,4% ~ 37Kg
Cell count		Index 12 / 2024
- 1 Rel. 90% cell		126 dtrs ~ 41 Herds Rel. 94% production

**INEL 51**



**GENES DIFFUSION**

Nous innovons, vous progressez

**DOUMA**

FR6205827795

**FLAMBEA**

FR6290000102

**COMIQUE**

FR5987006345

**VIVANIE**

FR6284000167

**URANE**

FR6204787553

**IRAN**

FR6293000122

**PAPONETTE**

FR6204057389



# GRISBI

## A2 / A2



**Production** 12 / 2024  
**Days** 305  
**Milk** 7,395 Kg  
**Fat** 4,24% \*  
**Protein** 3,45% \*

\* Adjusted up 5% to UK test

**14% DK**

Vinfix the dam of Grisbi combines milk quantity and solids, over 5 lactations she has averaged 8,628 kg of milk at 4,43% fat and 3,19% protein. A good sized cow with good udder with a nice slope to her rump angle. Grisbi has a normal calving ease and has 14% Danish blood. The sire of Grisbi is Gaspard, a bull from the 1990's, now first daughters are milking of Grisbi we see a big lift in production, on UK milk test his heifers have achieved 4,24% fat, 3,48% Protein. (UK test)

**Breeder : GAEC Dominique VAESKEN, 591114 Saint Sylvestre Cappel**  
**D.O.B. : 30 / 11 / 2011**  
**H.B.N. : FR 5943785336**

**A.I. Code UK**  
**MS 0502**

**VINFIX dam of GRISBI**



Milk	Protein	B / Fat
758	- 1.5% ~ 16Kg	0,6% ~ 33Kg
<b>Cell count</b>		<b>Index 12 / 2024</b>
0.2	78 dtrs ~ 34 Herds	
Rel. 85% cell	Rel. 91% production	

**INEL 21**

**PADIRAC**  
FR6279000146

**GASPARD**  
FR5991016671

**BALLERINE**  
FR5986009728

**OBELIX**  
FR6098005787

**VINFIX**  
FR5943785024

**RIKA**  
FR5925588145

**GRISBI**  
FR5943785336



**GENES DIFFUSION**

Nous innovons, vous progressez