

# NORMANDE

2025 edition

A fine selection some of the best Normande bulls sourced from France via our supplier Origen.

The Normande breed is recognised for its rich milk quality making the breed highly suited to cheese makers. In addition the breed offers exceptional fertility and calving ease due in part to the small head and the wide pelvic area.

The breed society was formed in the 1880's and today we see options within the breed to select bloodlines that offer extra muscularity for those dairy farmers looking to breed a cow with high residual value and also to have high value male calves.

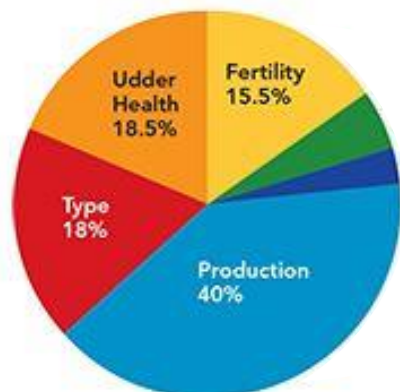
Alternately there are many bulls available that offer lighter frame and are more suited to extensive grazing farmers looking for a lighter animal. The Normande is ideal for cross breeding.

## Understanding the proofs

- **Calving ease & Calving ability:**  
Average = 89 with 90 and above being better and 88 and below is harder  
Calving ability is the daughters ability to calve easily
- **Vitality of calves at birth (direct) and at calving of daughters (indirect)**  
Average : 92 with up to 94 better and 90 below average
- **Rear leg set : + is posty**
- **Rump angle : + is sloped**
- **Udder balance : + is high rear quarters**
- **Teat direction: + is internal ~ for all 4 characteristics "0" is optimum**

- THE BREED IN FRANCE
- 344,840 cows
- 12,295 farms
- 225,836 cows under milk recording system
- 69,543 cows recorded in the Herd Book
- 523,453 artificial inseminations
- FRAME
- Height at withers (adult cow): 144 cm
- Adult cow weight: 700 to 800 kg
- Adult bull weight: 900 to 1,100 kg
- Young-bull carcass weight: 350 to 390 kg
- TRAITS
- Milk yield: 7,855 kg
- Milk yield 305 days: 6,575kg
- Fat content: 4.16 %
- Crude protein content: 3.60 %  
Official milk records 2014

## Selection ISU Index



Longevity  
9%

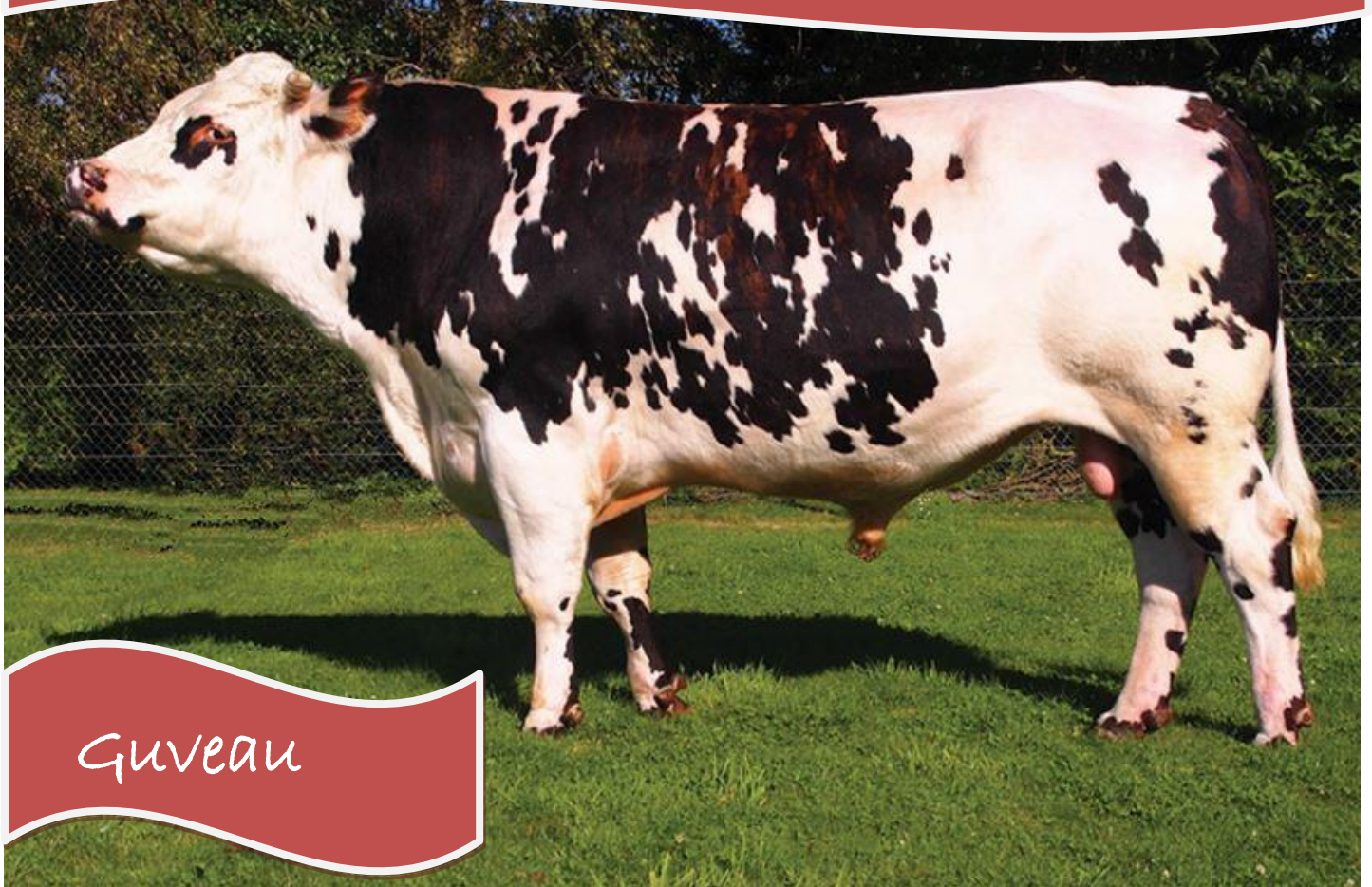
Milking  
Speed 3%

The French Normande ISU was adjusted in 2012 to give more importance towards functionality, more specifically udder health, fertility and legs & feet & legs. Production is reduced to 40% and the formula is entirely based on quantities of Kg of Protein & Fat, with a 10 to 1 tilt towards protein. Fertility has received a boost and is now a composite index made of the new "calving-1st AI interval" index and the previously introduced cow and heifer fertility indexes. Finally while Type still accounts for 18% udder and feet & legs get the lion share. What is more feet & legs now include locomotion.

## Type Index breed average

- Stature "0" = 145cm , + is taller
- Chest width "0" is 47cm, + is wider
- Chest Depth is 75cm, + is deeper
- Thurl width (pins) is 40cm + is wider

# NORMANDE

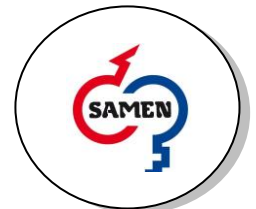


Guveau

Sire: <b>VIVRELEC</b> FR 5351389639						PGS: <b>NIRATUM (Entoi) Isu 80</b>					
Index	INEL	TP	TB	Milk	Isu	PGD: <b>PASSION (Grivois)</b>					
2018	28	+2.0	+2.1	+183	95						
Daughters 2715 Herds 1758 Rel 95%											
Dam: <b>CUVETTE</b> FR 5354613767						MGS: <b>RAFIOT (Immortel)</b>					
Age	Days	Milk	BF	Protein		MGD: <b>USETTE (Messenger)</b>					
2.09	320	7598	43,0	34,9		Age	Days	Milk	BF	Protein	
3.10	308	7534	41,9	34,8		2.06	382	7918	49,1	36,6	
						3.08	407	9221	49,1	37,4	

INEL -28 ~ Milk - 378  
Protein% +0.5 ~ Fat% + 0.6

Kappa  
Casein  
BB



Conformation traits		-2	-1	0	+1	+2
<b>Frame</b>	<b>+0.8</b>				→	
<b>Muscularity</b>	<b>+0.5</b>				→	
<b>Udder</b>	<b>+0.0</b>					
<b>Legs &amp; Feet</b>	<b>+0.1</b>				→	

## Functional traits

Calving difficulty <b>87</b>	Rel. <b>71%</b>	Milking speed <b>Normal</b>
Character <b>Good</b>		Cell count -0.1

HBN: FR 5354614026 - D.O.B. 31/8/2011

## Beef abilities young cattle Num. 40

Growth. Carcass	cd 65	-0.1	<div style="width: 10%;"></div>
Conformation	cd 69	0.4	<div style="width: 40%;"></div>
Apti. Butchers	cd 67	0.4	<div style="width: 40%;"></div>
Apti. Butchers €		19.1	

Guveau is a bull of very good origin, sire Vivrelec is an improver of milk and contents. His Dam Cuvette (VG 86) is a well developed cow with strength and good locomotion with functional udder and good teat length and shape. Guveau will enhance milk protein levels and adds muscle to his daughters whilst transmitting good character.

**N 0881**

Cattle Genie

# FILAXIE

National number: FR3566242470-56  
 Breeder: GAEC THE COUESNON (35)  
 Work number: 81370



- [ Frame ]
- [ Parlour traits ]
- [ Fertility ]
- + K-Casein BB
- + Very robust
- + Good udders
- + Legs & Feet improver and locomotion

**ISU 89 INEL -13 MD 0.7**

Daughters 278 / 204 Herds Rel. 95% Dec. 2024

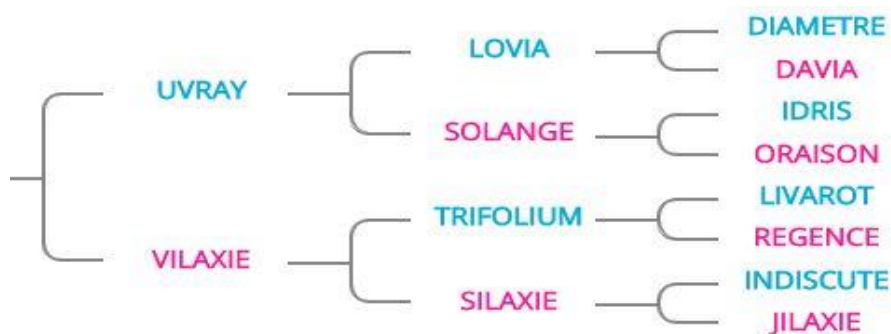
INEL	MP	MG	TP	TB	MILK
-13	-11	-13	0.3%	0.6%	-360Kg



Breast Health	Clinical Mastitis	Cells	Reprod Synthesis	Cow Fertility	Fertility Heifer	Inter calving IA
-0.5	-0.6	-0.3	-0.1	0.1	-0.7	0.5
Birth Facility	Calving Ease	Vitality Birth	Vitality Calving	Longevity	Processing Speed	Temp.
-0.52	0.47	-1.48	-0.68	0.0	0.5	-0.2

Cattle Genie

Kappa Casein B/B



**N 0873**

(Dec. 2024)

TYPE TRAITS 130 Dts.101 Herds Rel 92%

### FUNCTIONAL INDEX

<b>Udder Health</b>		-0.5	
Cells	cd 95	-0.3	
Clinical Mastitis	cd 79	-0.6	
<b>Reproduction</b>		-0.1	
Cow fertility	cd 86	0.1	
IVIA1	cd 88	0.3	
Fertility Heifer	cd 79	-0.7	
<b>Longevity</b>		0.0	
<b>Milking speed</b>	cd 92	0.5	
<b>Temperament</b>	cd 92	-0.2	

<b>Morphology</b>	0.7	
<b>Frame</b>	1.1	
Stature	1.1	
Chest Width	0.7	
Body Depth	1.2	
Ischial width	0.7	
Pelvis Tilt	0.0	
Straightness of the Top	0.2	
<b>Musculature</b>	0.7	
Fattening status	0.3	
<b>Udder</b>	-0.1	
Front attachment	0.5	
Balance	0.2	
Dist Floor Jarret	0.2	
Rear Attachment	-0.3	
Front Gap	-1.0	
Orientation	-1.4	
Ligament	0.0	
<b>Legs &amp; Feet</b>	0.8	
Angle of the Jarret	0.5	
Articulation Quality		
Foot angle	1.3	
Parallelism	-0.1	
Locomotion	0.9	

### FOOT HEALTH

<b>Infectious Lesions</b>		0.5	
Digital Dermatitis	cd 66	0.6	
Slug	cd 66	0.4	
Heel Horn Erosion	cd 66	0.2	
<b>Mechanical Injuries</b>		-0.3	
Sole ulcer	cd 65	-0.5	
White Line Opening	cd 65	0.6	
Necrosis of the Pincer	cd 65	-1.0	
Bleime Circumscribed	cd 65	0.0	
Bleime Diffuse	cd 65	0.7	

### CALVING EASE INDEX

Calving ease Rel. 95%.	- 0.5
Maternal calving ease Rel. 87%	0.5

### CALVING VITALITY INDEX

Vitality of birth Rel. 78%	-1.5
Vitality of calving Rel. 74%	- 0.7

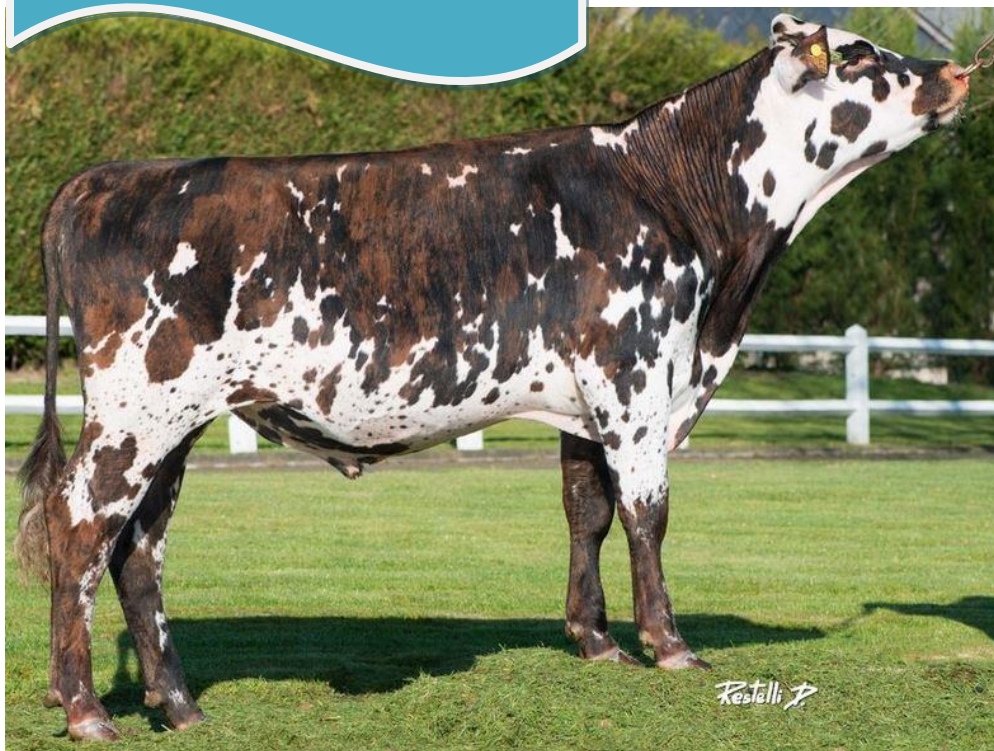


Plus supplier GB  
Cattle Genie

FILAXIE is a Normande bull with milking daughters that are great farmer cows. He adds width and depth of body to those cows that need strength. He improves feet & legs and leaves good udders. Filaxie has above average improvement for udder health and has good milking speed. Fertility is good also, only thing to be mindful of is his calving ease is average so not suitable for maiden heifers.

# Luberon ET

National number: FR611077823-56  
 Breeder: GAEC OF THE MARTINBRIDGE (61)  
 Work number: 88983



Cattle Genie

**ISU97 INEL-17 MD 1.0**

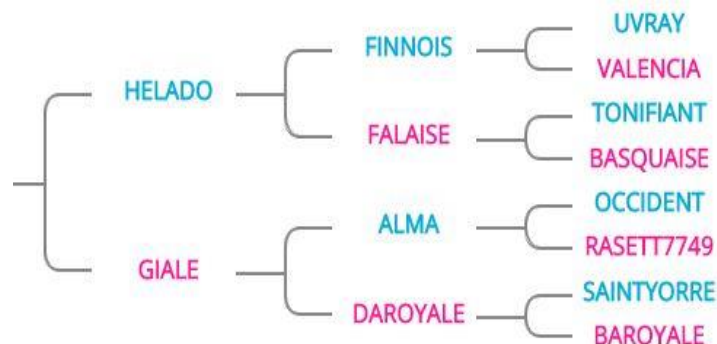
Production December 2024  
 Rel. 82% 20 Daughters 18 Herds

INEL	MP	MG	TP	TB	MILK
-17	-14	-23	1.0	0.0	-514

Functional Index Daughters 20 / 18 Herds Rel. 82% Dec. 2024

Breast Health	Clinical Mastitis	Cells	Reprod Synthesis	Cow Fertility	Fertility Heifer	Inter calving IA
0.2	0.1	0.3	0.7	0.8	0.4	0.0
Birth Facility	Calving Ease	Vitality Birth	Vitality Calving	Longevity	Processing Speed	Temp.
0.84	-1.33	0.36	-0.24	0.7	-0.4	0.4

- [ High fertility ]
- [ Super udder quality ]
- [ Super udder health ]
- [ High longevity ]
- + Easy calving Bull
- + Wide & capacious
- + Suited to grazing
- + Super legs & Feet



GIALE Dam of LUBERON

Kappa Casein A/B

**N 0875**

FR 6110778231

D.O.B. 22/04/2015

ORIGEN NORMANDE

## TYPE TRAITS

Rel. 74% number daughters 13 Herds 12

<b>Morphology</b>	1.0	
<b>Frame</b>	-0.2	
Stature	-0.8	
Chest Width	0.3	
Body Depth	-0.2	
Ischial width	-0.4	
Pelvis Tilt	-1.4	
Straightness of the Top	0.5	
<b>Musculature</b>	0.4	
Fattening status	1.5	
<b>Udder</b>	1.3	
Front attachment	0.4	
Balance	0.9	
Dist Floor Jarret	0.8	
Rear Attachment	2.0	
Front Gap	1.5	
Orientation	0.7	
Ligament	1.4	
<b>Legs &amp; Feet</b>	0.0	
Angle of the Jarret	0.2	
Articulation Quality	0.1	
Foot angle	0.2	
Parallelism	-0.5	
Locomotion	0.0	

## FUNCTIONAL TRAITS

<b>Udder Health</b>		0.2	
Cells	cd 77	0.3	
Clinical Mastitis	cd 54	0.1	
<b>Reproduction</b>		0.7	
Cow fertility	cd 64	0.8	
IVIA1	cd 66	0.0	
Fertility Heifer	cd 58	0.4	
<b>Longevity</b>	cd 76	0.7	
<b>Milking speed</b>	cd 75	-0.4	
<b>Temperament</b>	cd 75	0.4	

## CALVING VITALITY INDEX

Calving ease Rel. 79%	0.8
Maternal calving ease Rel. 68%	-1.3

## CALVING EASE INDEX

Vitality of birth Rel. 55%	0.2
Vitality of calving Rel. 53%	-0.2

## HOOF HEALTH

<b>Foot Health</b>	0.3	
<b>Infectious Lesions</b>	0.2	
Digital Dermatitis	0.0	
Slug	0.4	
Heel Horn Erosion	0.7	
<b>Mechanical Injuries</b>	0.4	
Sole ulcer	0.8	
White Line Opening	0.2	
Necrosis of the Pincer	0.1	
Bleime Circumscribed	0.6	
Bleime Diffuse	0.3	



# Hongkong

Work number: FR4939349271-56  
 Breeder: Breeding Corbet (49)  
 Work number: 84357



## ISU 98 INEL 12 MO-0.5

- [ High Fertility ]
- [ Adds Width ]
- [ Super temper ]
- [ Strong Udder ]

- + Daughter proven
- + Good milking speed
- + Easy calving Sire
- + High Productions

Daughters 141 / 114 Herds Rel. 95% December 2024

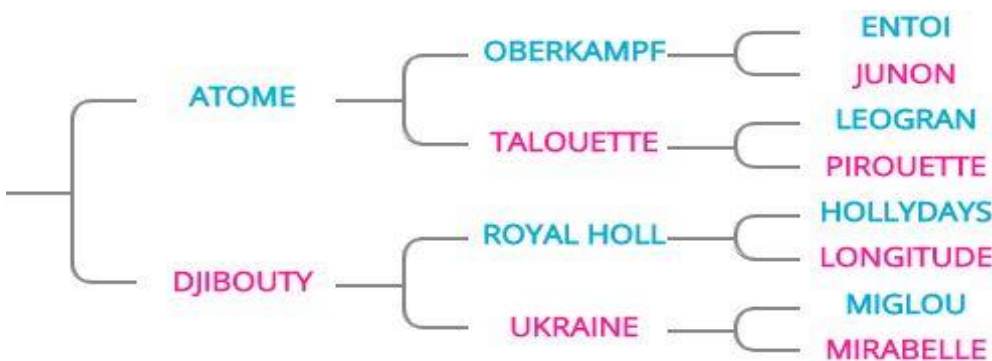
INEL	MP	MG	TP	TB	MILK
12	9	13	0.0	0.3	296

**LATEST INFO:**  
 ML Mother: Rg3, with 9718kg at 39.8 TB and 35.7 TP in 364 days and pointed 9 SQ / 5 MU / 6 AP / 7 MA / 4 CC / 89pts

Breast Health	Clinical Mastitis	Cells	Reprod Synthesis	Cow Fertility	Fertility Heifer	Inter calving IA
-0.5	-0.2	-0.6	0.1	0.6	-0.2	-0.9
Birth Facility	Calving Ease	Vitality Birth	Vitality Calving	Longevity	Processing Speed	Temp.
0.46	1.29	0.57	0.64	0.0	0.7	1.3

**HOOF HEALTH INDEX**  
 MTL is digital dermatitis  
 UL is ulcer/abcess/cherry  
 LMCE is a slug/lump in-between the claw  
 - minus is a negative

MTL	UL	LMCE
1.0	-1.5	2.4



**N 0861**

Cattle Genie

Kappa Casein A/B



## FUNCTIONAL TRAITS

<b>Udder Health</b>		-0.5	
Cells	cd 92	-0.6	
Clinical Mastitis	cd 68	-0.2	
<b>Reproduction</b>		0.1	
Cow fertility	cd 78	0.6	
IVIA1	cd 80	-0.9	
Fertility Heifer	cd 71	-0.2	
<b>Longevity</b>	cd 86	0.0	
<b>Milking speed</b>	cd 86	0.7	
<b>Temperament</b>	cd 86	1.3	

## HOOF HEALTH

<b>Foot Health</b>		0.5	
<b>Infectious Lesions</b>		1.2	
Digital Dermatitis		1.3	
Slug		1.3	
Heel Horn Erosion		0.6	
<b>Mechanical Injuries</b>		-0.5	
Sole ulcer		-0.6	
White Line Opening		-0.1	
Necrosis of the Pincer		-0.3	
Bleime Circumscribed		-1.0	
Bleime Diffuse		-1.2	

## TYPE TRAITS 57 Dts. 47 Herds Rel 86%

<b>Morphology</b>		-0.5	
<b>Frame</b>		0.4	
Stature		0.0	
Chest Width		-0.1	
Body Depth		0.1	
Ischial width		1.0	
Pelvis Tilt		0.2	
Straightness of the Top		-1.0	
<b>Musculature</b>		-1.3	
Fattening status		0.2	
<b>Udder</b>		0.0	
Front attachment		0.5	
Balance		-0.1	
Dist Floor Jarret		-0.3	
Rear Attachment		1.4	
Front Gap		0.0	
Orientation		0.7	
Ligament		-0.2	
<b>Legs &amp; Feet</b>		-0.7	
Angle of the Jarret		-0.8	
Articulation Quality		1.5	
Foot angle		-0.8	
Parallelism		-1.3	
Locomotion		-0.3	

## CALVING EASE INDEX

Ease of birth	cd 91	0.5
Calving Ease	cd 78	1.3

## CALVING VITALITY INDEX

Birth Vitality	cd 70	0.6
Calving Vitality	cd 64	0.6



Plus supplier GB Cattle Genie



# Handelles

National number: FR1446509896-56  
 Breeder: Scea Lahaye (14)  
 Work number: 83887



**ISU 109 INEL 0 MD 0.6**

- [ Morphology ]
- [ Temperament ]
- [ Locomotion ]
- [ Eye Catching ]

- + Good milk volume
- + Good milking speed
- + Easy calving Sire
- + Adds Muscle £££
- + Daughter proven bull

Daughters 992 / 551 Herds Rel. 95% December 2024

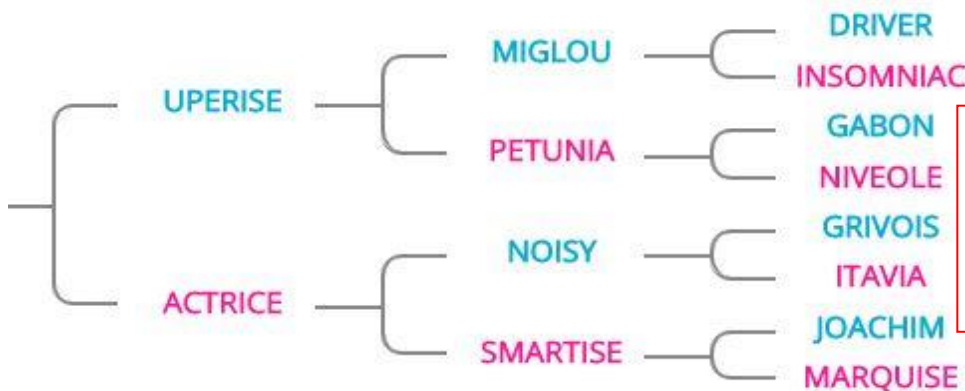
INEL	MP	MG	TP	TB	MILK
0	0	12	-2.4	-0.9	433

Breast Health	Clinical Mastitis	Cells	Reprod Synthesis	Cow Fertility	Fertility Heifer	Inter calving IA
-0.9	-0.9	-0.8	0.1	0.6	0.0	-1.5

Birth Facility	Calving Ease	Vitality Birth	Vitality Calving	Longevity	Processing Speed	Temp.
0.74	0.47	1.18	0.32	0.8	0.9	0.3



Daughter of HANDELLES



**LATEST INFO:**

ML Mother: Rg, with kg at TB and TP in days and clocked 9 SQ / 7 MU / 5 AP / 7 MA / 4 CC / 91pts

Cattle Genie

Kappa Casein A/B

**N 0860**



## FUNCTIONAL TRAITS

<b>Udder Health</b>		-0.9	
Cells	cd 95	-0.8	
Clinical Mastitis	cd 88	-0.9	
<b>Reproduction</b>		0.1	
Cow fertility	cd 95	0.6	
IVIA1	cd 95	-1.5	
Fertility Heifer	cd 91	0.0	
<b>Longevity</b>		0.8	
<b>Milking speed</b>		0.9	
<b>Temperament</b>		0.3	

BEEF PROGENY ON FARM TESTING CALVES  
Number : 326

<b>Foot Health</b>		-0.1	
<b>Infectious Lesions</b>		-0.8	
Digital Dermatitis		-0.9	
Slug		-1.2	
Heel Horn Erosion		0.5	
<b>Mechanical Injuries</b>		0.9	
Sole ulcer		0.7	
White Line Opening		1.2	
Necrosis of the Pincer		0.7	
Bleime Circumscribed		1.0	
Bleime Diffuse		1.3	

## TYPE TRAITS 373 Dts. 213 Herds Rel 95%

<b>Morphology</b>		0.6	
<b>Stature</b>		0.2	
Sacrum Height		-0.3	
Chest Width		-0.1	
Body Depth		0.4	
Ischial width		0.3	
Pelvis Tilt		0.6	
Straightness of the Top		0.4	
<b>Musculature</b>		0.1	
Fattening status		-0.6	
<b>Udder</b>		0.5	
Front attachment		0.7	
Balance		0.8	
Dist Floor Jarret		-0.2	
Rear Attachment		-0.6	
Front Gap		1.0	
Orientation		1.8	
Ligament		0.0	
<b>Legs &amp; Feet</b>		0.4	
Angle of the Jarret		0.2	
Articulation Quality		-0.2	
Foot angle		0.4	
Parallelism		0.5	
Locomotion		0.4	

## CALVING EASE INDEX

Ease of birth	cd 95	0.7
Calving Ease	cd 95	0.5

## CALVING VITALITY INDEX

Birth Vitality	cd 90	1.2
Calving Vitality	cd 87	0.3



Plus supplier GB Cattle Genie